

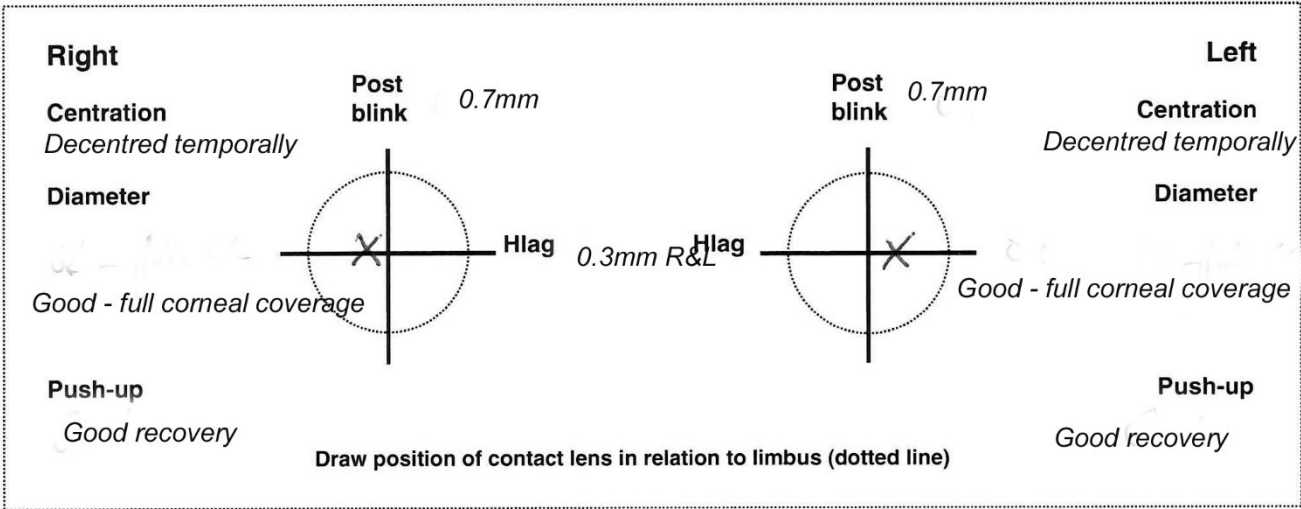


THE COLLEGE OF
OPTOMETRISTS

Stage Two

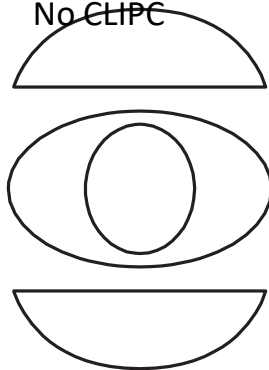
Overarching case scenario 90

Contact lens fit

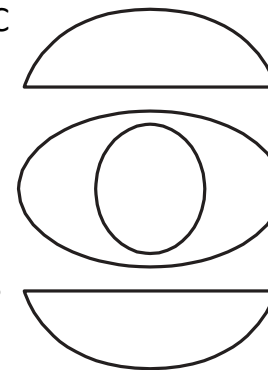


External examination

Very mild blepharitis, grade 0.5 MGD
No CLIPC



Very mild blepharitis, grade 0.5 MGD
No CLIPC



2mm ingrowth of limbal vessels R&L – see images
on next slide

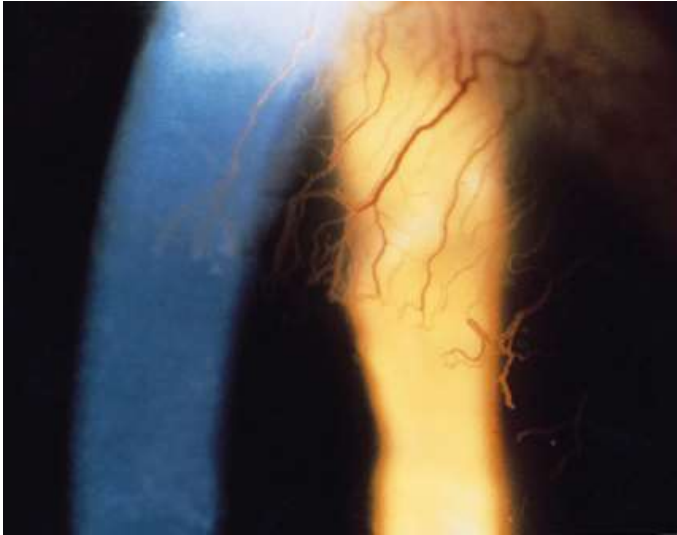
Grade 0.5 limbal hyperaemia RE, grade 2 LE

No corneal staining R or L

tBUT 12 seconds R&L

Scenario G32 Corneal appearance

RE



LE

